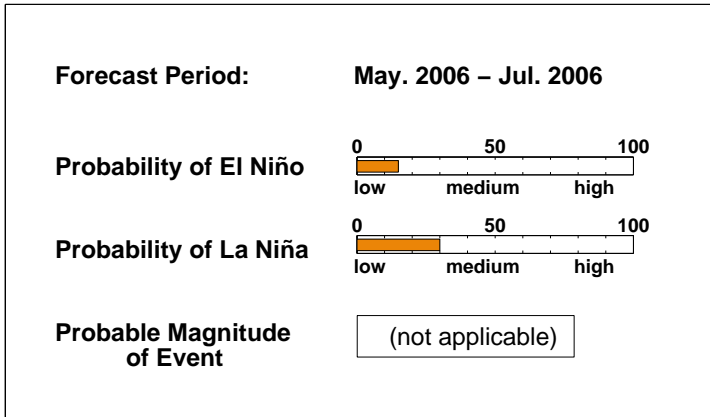


ENSO QUICK LOOK January 19, 2006

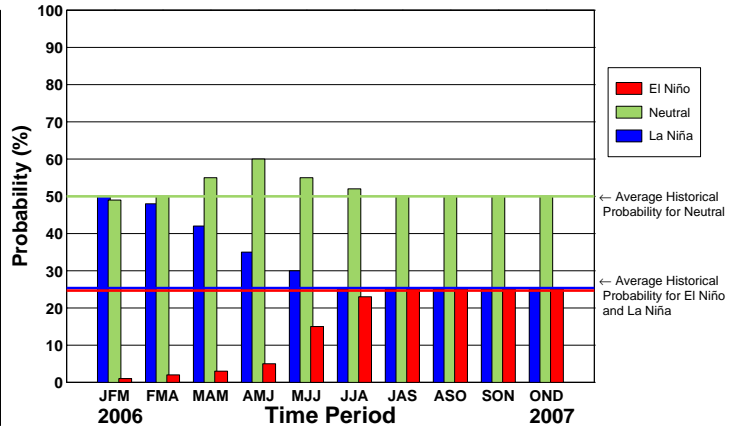
A monthly summary of the status of El Niño, La Niña and the Southern Oscillation, or "ENSO"

Cooler than average sea surface temperatures continue to develop in the eastern and central equatorial Pacific, and as of mid-January La Niña conditions are currently observed. Based on the latest observations and forecasts, the probability of a La Niña event over the Jan-Feb-Mar 2006 season is 50

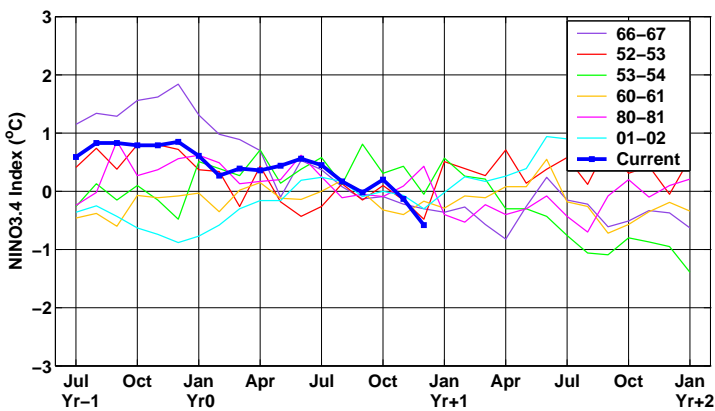
Current ENSO Forecast Summary¹



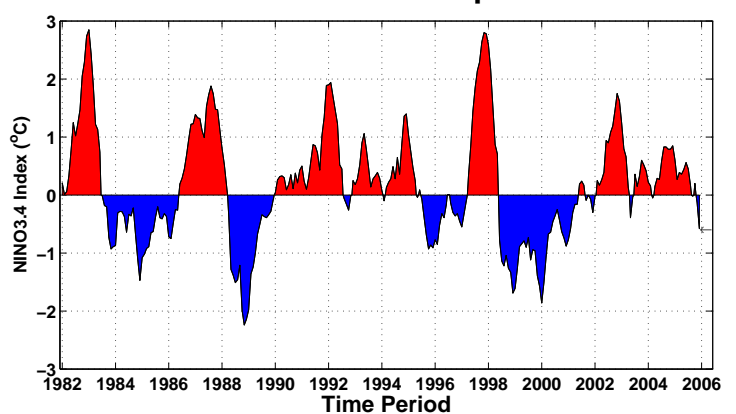
IRI Probabilistic ENSO Forecast²



Current Condition vs. Similar Conditions²



Historical Sea Surface Temperature Index²



Historically Speaking

- El Niño and La Niña events tend to develop during the period Apr-Jun and they:*
- Tend to reach their maximum strength during Dec-Feb
 - Typically persist for 9-12 months, though occasionally persisting for up to 2 years
 - Typically recur every 2 to 7 years

¹Probability of an El Niño refers to the likelihood of a sustained (that is, over several seasons) warming across a broad region of the eastern and central tropical Pacific, not just along coastal South America.

²Based on sea surface temperature departures from the long-term average over the "NINO3.4" region (120-170W, 5S-5N).