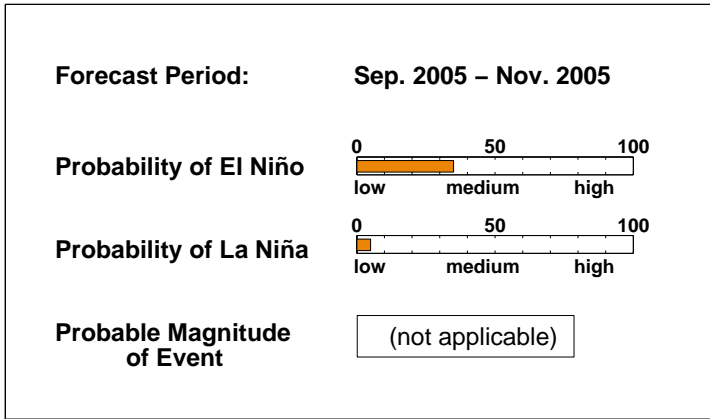


ENSO QUICK LOOK May 19, 2005

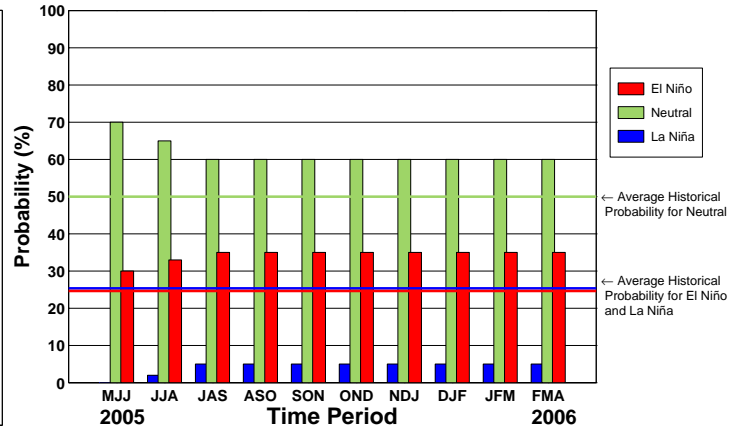
A monthly summary of the status of El Niño, La Niña and the Southern Oscillation, or "ENSO"

Sea surface temperatures in the eastern and central equatorial Pacific are currently near-normal or ENSO-neutral, although they remain above-average throughout much of the equatorial Pacific. Based on the latest observations and forecasts, it is 70 percent likely that neutral conditions will prevail over the May-Jun-Jul 2005 season.

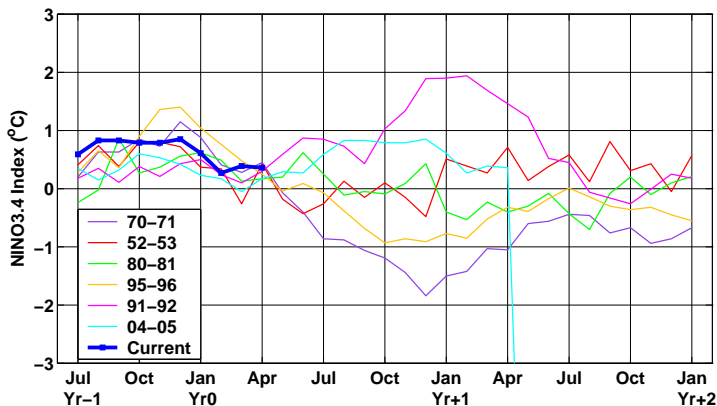
Current ENSO Forecast Summary¹



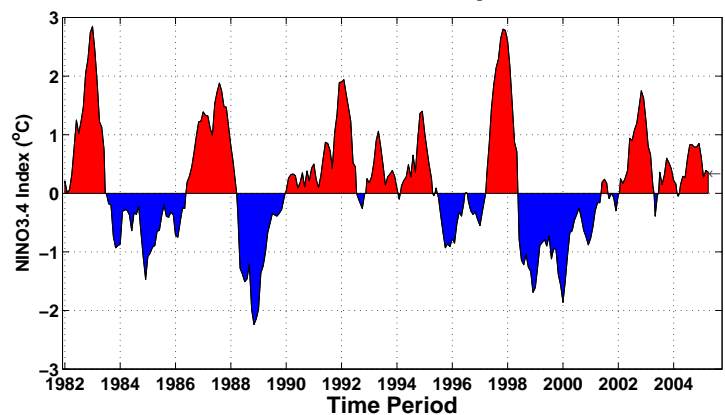
IRI Probabilistic ENSO Forecast²



Current Condition vs. Similar Conditions²



Historical Sea Surface Temperature Index²



Historically Speaking

- El Niño and La Niña events tend to develop during the period Apr-Jun and they:*
- Tend to reach their maximum strength during Dec-Feb
 - Typically persist for 9-12 months, though occasionally persisting for up to 2 years
 - Typically recur every 2 to 7 years

¹Probability of an El Niño refers to the likelihood of a sustained (that is, over several seasons) warming across a broad region of the eastern and central tropical Pacific, not just along coastal South America.

²Based on sea surface temperature departures from the long-term average over the "NINO3.4" region (120-170W, 5S-5N).