

ENACTS

TRANSFORMING CLIMATE SENSITIVE DECISIONS

New Tools for Community
Adaptation in Ghana

The Enhancing National Climate Services (ENACTS) initiative delivers robust climate data, targeted information products and training for policy makers and practitioners, enabling them to apply climate information to development decisions with confidence.



TRANSFORMING CLIMATE SENSITIVE DECISIONS

Adapting to a changing climate requires community-based strategies, which can spread or reduce potential climate risks. Concrete adaptation measures include planting drought tolerant seeds, purchasing weather based index insurance, using climate information for early warning. Diversifying income streams to sources that are less climate dependent is also important.

Overcoming the data challenge

Climate information involving historical analysis, monitoring and prediction tools can play an important role in building community resilience if it:

- is of sufficient quality to inform decisions at a local level.
- has a long enough historical time

series to provide context to current observations and future forecasts and predictions.

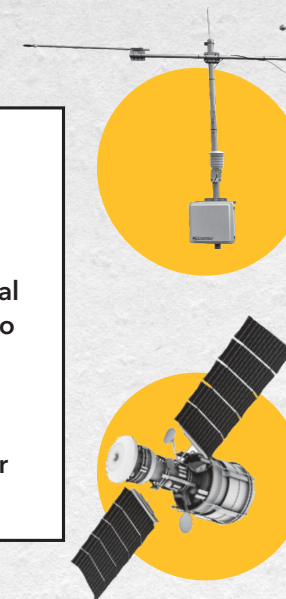
- can be presented in a way that is both scientifically robust and readily understood by those that need to use it.
- is available when and where it is needed.

“A key element of future adaptive capacity is for people to have a range of options available to them to sustain their livelihoods under different conditions.”
– CARE Climate Change



ABOUT...

The ENACTS data products combine information from local observations and also from satellites and global models. This allows for superior accuracy and sharper analysis.



Local climate observations

Global climate products

THE ENACTS DATA & MAPROOMS



1
Online data from robust sources

2
Enhanced forecasts & risk characterization

3
Best information to empower decision makers

IMPACT ON LIVELIHOODS RESILIENCE

Allows for an understanding of variability and trends in temperature at scales relevant for community-based decision-making.

Design early warning systems which use downscaled seasonal climate forecast information to alert communities to potential changes in the food security situation.

Strengthen activities to support climate-smart sustainable development, including multi-sectoral approaches to climate risk management and longer-term adaptation through adoption of sound agricultural practices.



ENACTS@IRI.COLUMBIA.EDU



@CLIMATESOCIETY



/CLIMATESOCIETY



The provision of these services to Ghanaians will help improve the livelihood of the people, water resource management, agriculture, health, energy and the development of Ghana.



– Ghana Meteorological Agency

The ENACTS Advantage

Availability

- Blended data to overcome observational gaps
- Result: Over 30 years of high-resolution rainfall and temperature data now available, enabling climate analysis from community to national levels.

Access

- Online Maprooms
- Result: User-friendly tools for the analysis, visualization, and downloading of climate information.

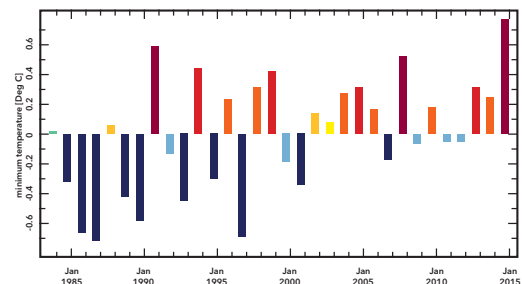
Built capacity and empowerment

- Empowered stakeholders with increased capacity
- Result: Strengthened policy analysis, relevant for multiple sectors.



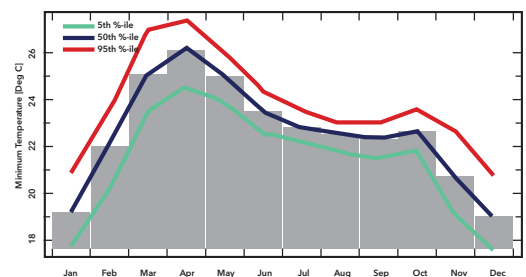
In northern Ghana minimum temperature has been rising consistently over the last 30 years.

Yearly Seasonal Min Temperature Anomalies



Observations for Upper East, Ghana

Monthly Minimum Temperature Climatology



FIND OUT MORE...

<http://maps.meteo.gov.gh:89/maproom>

iri.columbia.edu

Partners



USAID
FROM THE AMERICAN PEOPLE



President's Malaria Initiative



RESEARCH PROGRAM ON
Climate Change,
Agriculture and
Food Security

