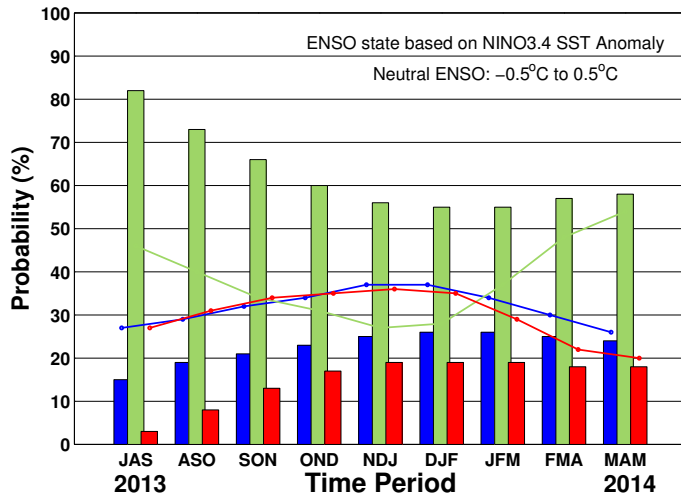


ENSO QUICK LOOK August 15, 2013

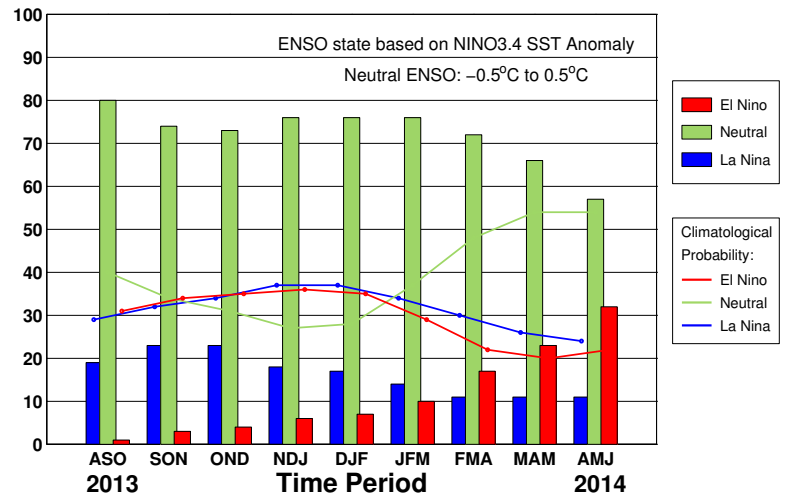
A monthly summary of the status of El Niño, La Niña and the Southern Oscillation, or “ENSO”, based on NINO3.4 index (120-170W, 5S-5N)

During July through early August the observed ENSO conditions remained neutral. Most of the ENSO prediction models indicate a continuation of neutral ENSO through the remainder of 2013 and into early 2014. However, a few (mainly statistical) models call for cooling toward borderline or weak La Niña conditions for northern autumn into winter, while a few others (mainly dynamical) forecast some warming toward borderline or weak El Niño conditions for this same time frame.

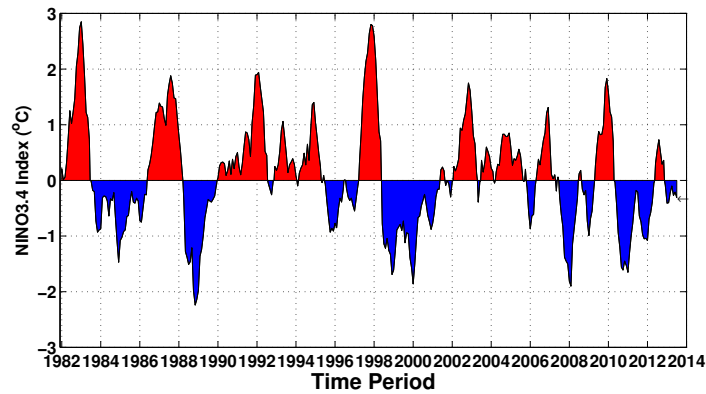
Early-Aug CPC/IRI Consensus Forecast¹



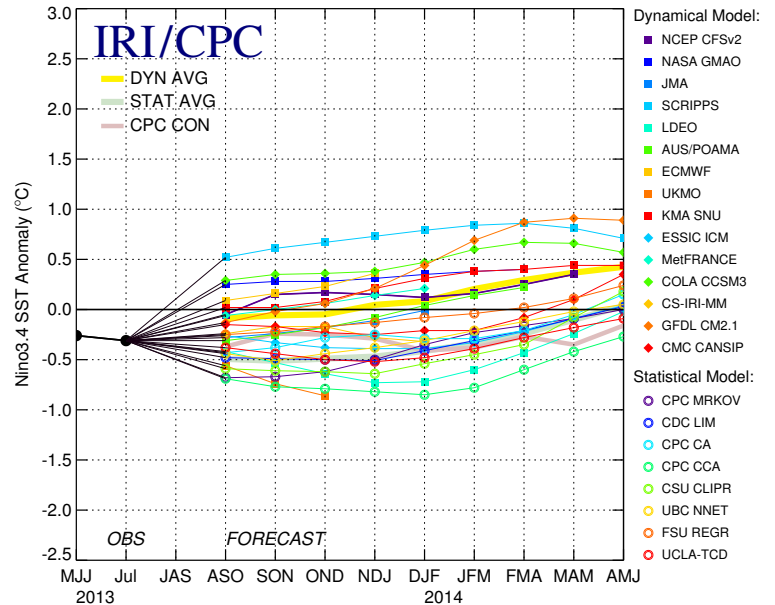
Mid-Aug IRI/CPC Plume-Based Forecast²



Historical Sea Surface Temperature Index



Mid-Aug 2013 Plume of Model ENSO Predictions



Historically Speaking

- El Niño and La Niña events tend to develop during the period Apr-Jun and they:*
- Tend to reach their maximum strength during Dec-Feb
 - Typically persist for 9-12 months, though occasionally persisting for up to 2 years
 - Typically recur every 2 to 7 years

¹Based on a consensus of CPC and IRI forecasters, in association with the official CPC/IRI ENSO Diagnostic Discussion.

²Purely objective, based on regression, using equally weighted model predictions from the plume.