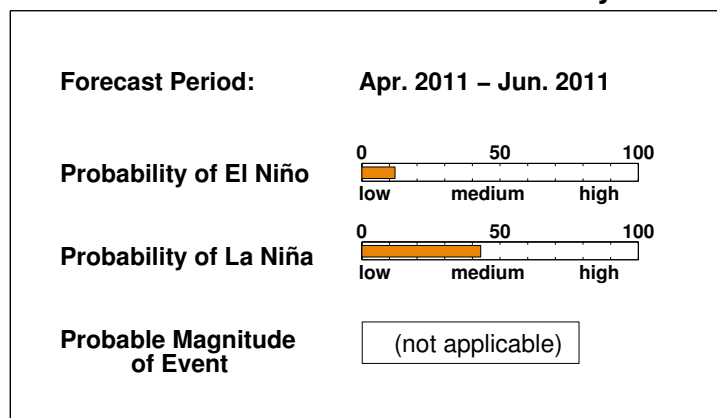


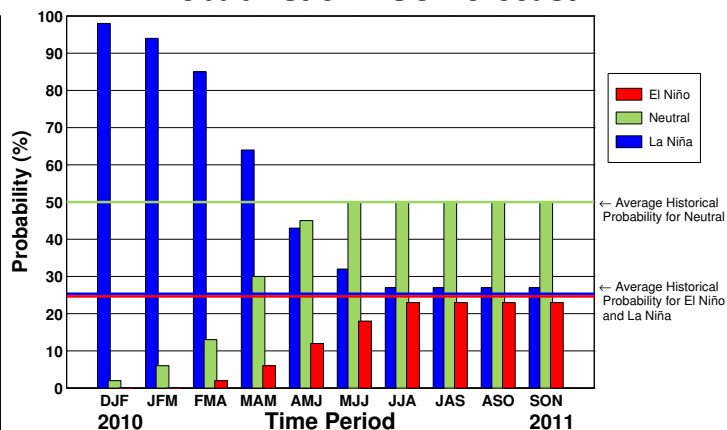
ENSO QUICK LOOK December 16, 2010 A monthly summary of the status of El Niño, La Niña and the Southern Oscillation, or "ENSO"

Moderate to strong La Niña conditions have been observed since mid-August 2010. For the December-February season currently in progress, there is an approximately 98 percent probability for continuing La Niña conditions, and a 2 percent probability for returning to neutral ENSO conditions. Probabilities for La Niña conditions continue at 94 percent or more through the January-March season of 2011, and do not drop to below 50 percent until the April-June season.

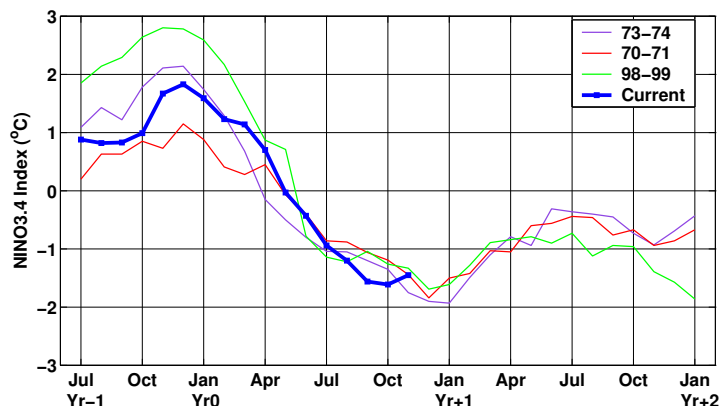
Current ENSO Forecast Summary¹



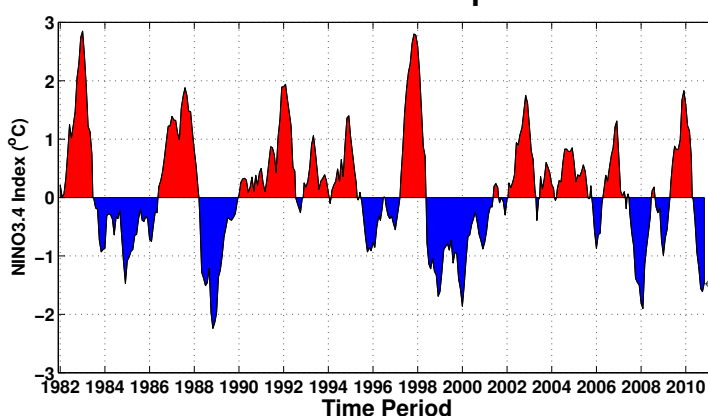
IRI Probabilistic ENSO Forecast²



Current Condition vs. Similar Conditions²



Historical Sea Surface Temperature Index²



Historically Speaking

El Niño and La Niña events tend to develop during the period Apr-Jun and they:

- *Tend to reach their maximum strength during Dec-Feb*
- *Typically persist for 9-12 months, though occasionally persisting for up to 2 years*
- *Typically recur every 2 to 7 years*

¹Probability of an El Niño refers to the likelihood of a sustained (that is, over several seasons) warming across a broad region of the eastern and central tropical Pacific, not just along coastal South America.

²Based on sea surface temperature departures from the long-term average over the "NINO3.4" region (120-170W, 5S-5N).