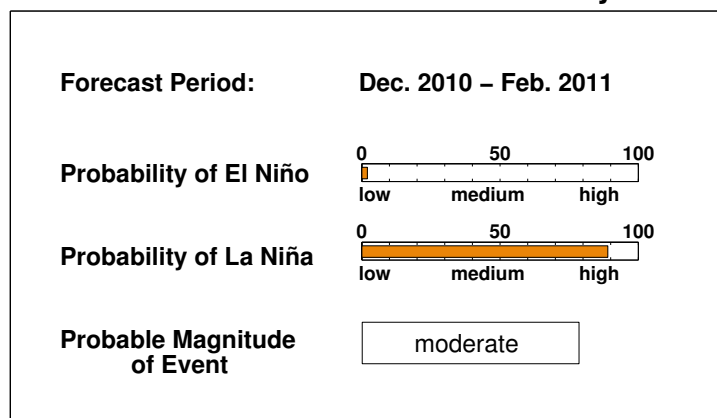


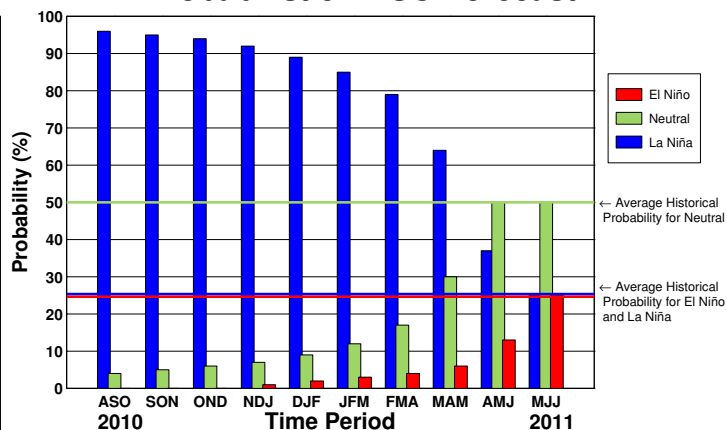
ENSO QUICK LOOK August 19, 2010 A monthly summary of the status of El Niño, La Niña and the Southern Oscillation, or "ENSO"

Weak La Niña conditions emerged in mid-June 2010, and increased to moderate strength by mid-July. For the August-October season currently in progress, there is an approximately 96 percent probability for continuing La Niña conditions, and a 4 percent probability for returning to neutral ENSO conditions. Probabilities for La Niña conditions continue at more than 90 percent through the remainder of 2010 and in the 80-90 percent range during the early months of 2011.

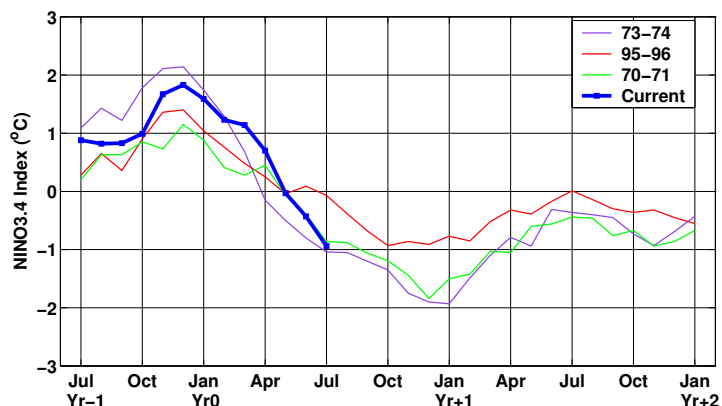
Current ENSO Forecast Summary¹



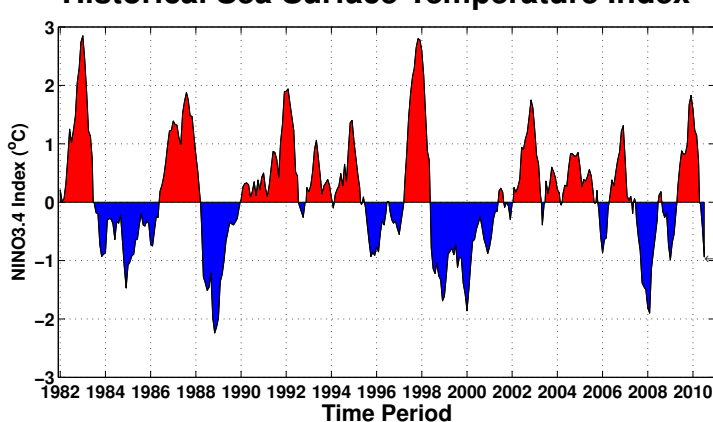
IRI Probabilistic ENSO Forecast²



Current Condition vs. Similar Conditions²



Historical Sea Surface Temperature Index²



Historically Speaking

El Niño and La Niña events tend to develop during the period Apr-Jun and they:

- *Tend to reach their maximum strength during Dec-Feb*
- *Typically persist for 9-12 months, though occasionally persisting for up to 2 years*
- *Typically recur every 2 to 7 years*

¹Probability of an El Niño refers to the likelihood of a sustained (that is, over several seasons) warming across a broad region of the eastern and central tropical Pacific, not just along coastal South America.

²Based on sea surface temperature departures from the long-term average over the "NINO3.4" region (120-170W, 5S-5N).