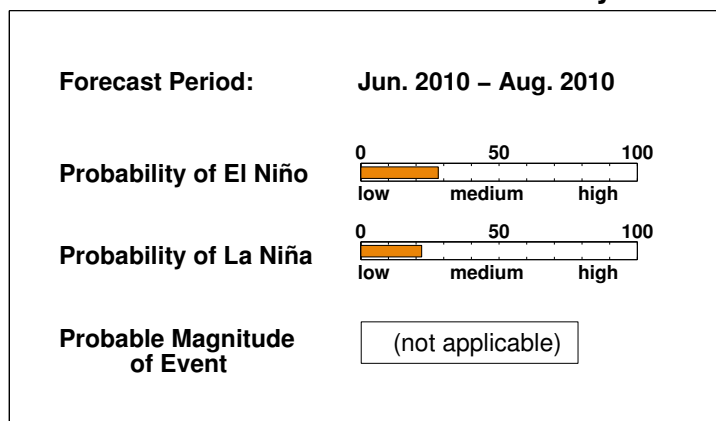


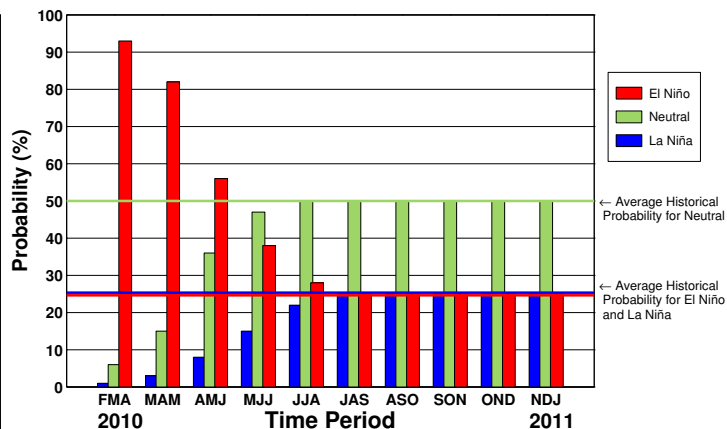
ENSO QUICK LOOK Feb 18, 2010 A monthly summary of the status of El Niño, La Niña and the Southern Oscillation, or "ENSO"

El Niño conditions remain moderate strength in the equatorial Pacific. For the Feb-Apr season in progress there is an approximately 93 percent probability of maintaining El Niño conditions. Probabilities for El Niño stay above 80 percent through the Mar-May season, decreasing to 55-60 percent by Apr-Jun season and to the climatological probability of 25 percent by the Jul-Sep season.

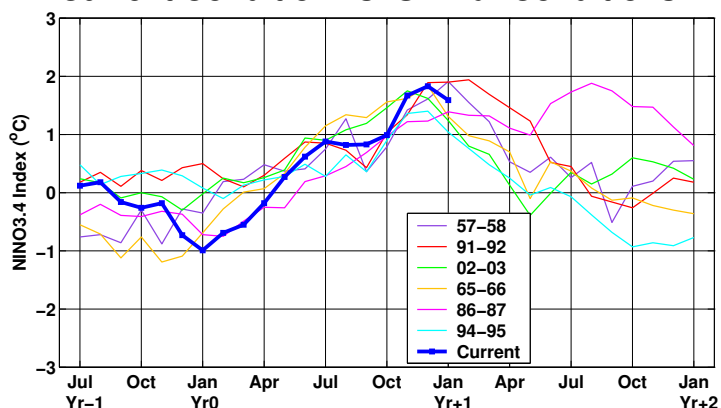
Current ENSO Forecast Summary¹



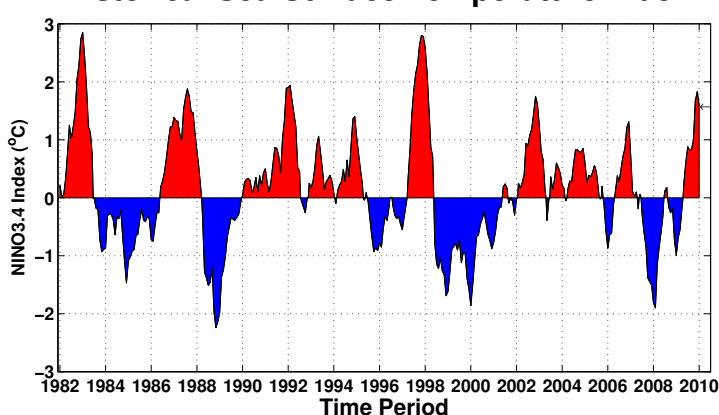
IRI Probabilistic ENSO Forecast²



Current Condition vs. Similar Conditions²



Historical Sea Surface Temperature Index²



Historically Speaking

El Niño and La Niña events tend to develop during the period Apr-Jun and they:

- Tend to reach their maximum strength during Dec-Feb
- Typically persist for 9-12 months, though occasionally persisting for up to 2 years
- Typically recur every 2 to 7 years

¹Probability of an El Niño refers to the likelihood of a sustained (that is, over several seasons) warming across a broad region of the eastern and central tropical Pacific, not just along coastal South America.

²Based on sea surface temperature departures from the long-term average over the "NINO3.4" region (120-170W, 5S-5N).