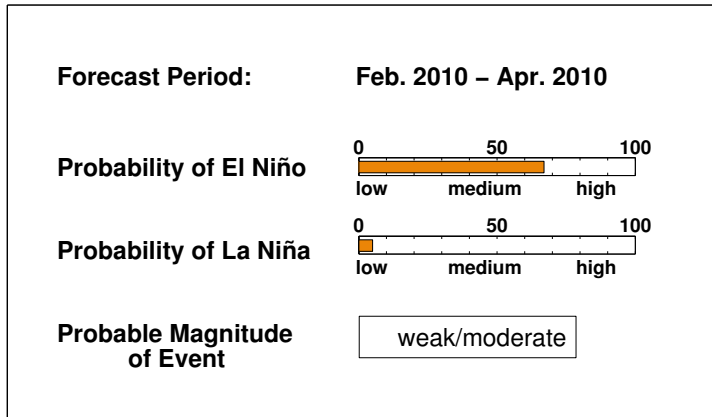


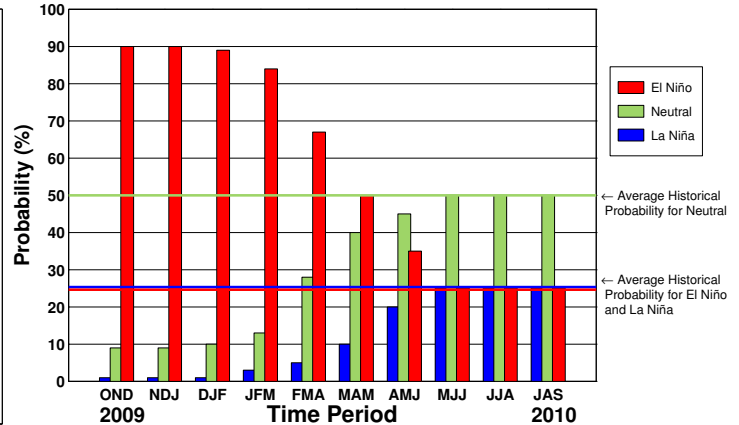
ENSO QUICK LOOK Oct 15, 2009 A monthly summary of the status of El Niño, La Niña and the Southern Oscillation, or "ENSO"

Conditions in the equatorial Pacific remain indicative of a weak-to-moderate El Niño. For the Oct-Dec and Nov-Jan seasons there is an approximately 90 percent probability of maintaining at least weak El Nio conditions, and a 10 percent probability of returning to ENSO-neutral conditions. Probabilities for El Niño stay above 80 percent through the Jan-Mar season, decreasing to 50 percent by Mar-May season and to the climatological probability of 25 percent by the May-Jul season.

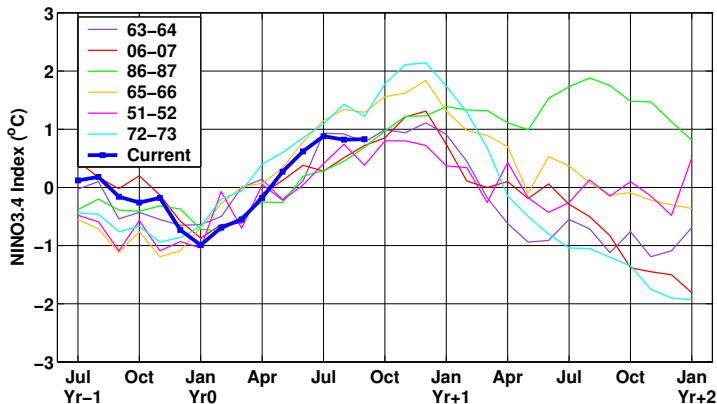
Current ENSO Forecast Summary¹



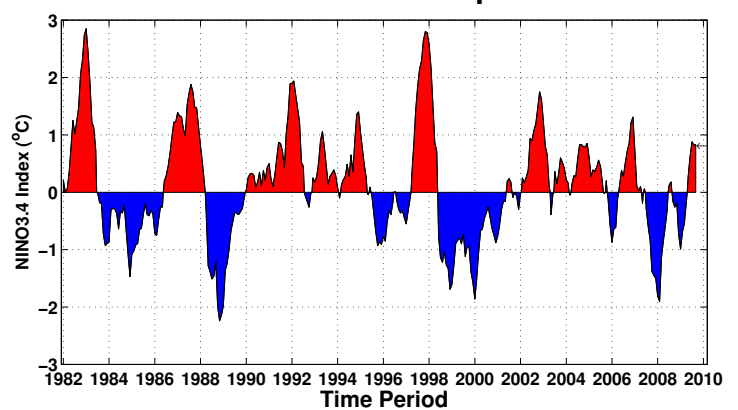
IRI Probabilistic ENSO Forecast²



Current Condition vs. Similar Conditions²



Historical Sea Surface Temperature Index²



Historically Speaking

El Niño and La Niña events tend to develop during the period Apr-Jun and they:

- *Tend to reach their maximum strength during Dec-Feb*
- *Typically persist for 9-12 months, though occasionally persisting for up to 2 years*
- *Typically recur every 2 to 7 years*

¹Probability of an El Niño refers to the likelihood of a sustained (that is, over several seasons) warming across a broad region of the eastern and central tropical Pacific, not just along coastal South America.

²Based on sea surface temperature departures from the long-term average over the "NINO3.4" region (120-170W, 5S-5N).