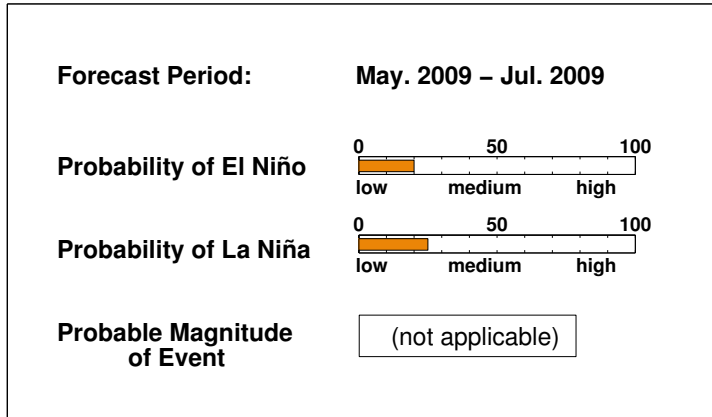


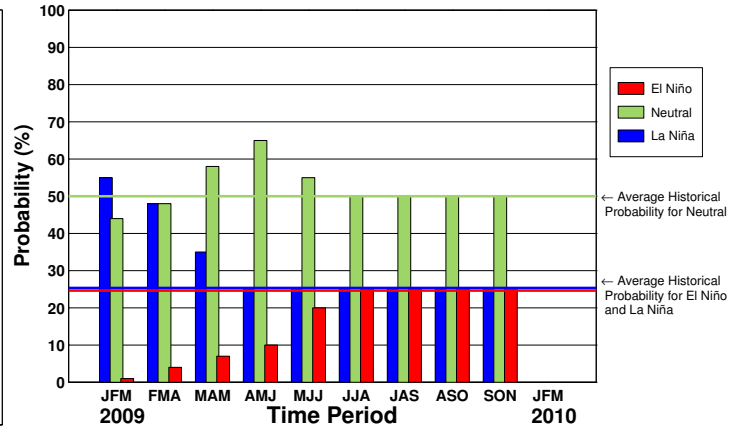
ENSO QUICK LOOK Jan 14, 2009 A monthly summary of the status of El Niño, La Niña and the Southern Oscillation, or "ENSO"

The equatorial Pacific is presently exhibiting La Niña conditions. The equatorial Pacific region shows mainly below-average sea surface temperatures (SSTs). There is a 55 percent probability of La Niña conditions persisting over the coming season, and 45-50 percent for return to ENSO-neutral conditions.

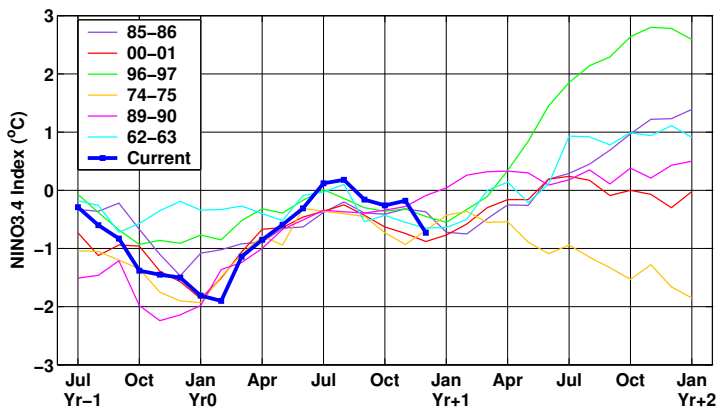
Current ENSO Forecast Summary¹



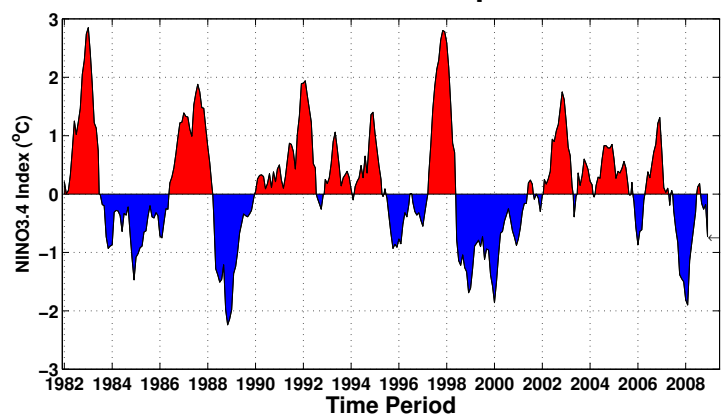
IRI Probabilistic ENSO Forecast²



Current Condition vs. Similar Conditions²



Historical Sea Surface Temperature Index²



Historically Speaking

El Niño and La Niña events tend to develop during the period Apr-Jun and they:

- Tend to reach their maximum strength during Dec-Feb
- Typically persist for 9-12 months, though occasionally persisting for up to 2 years
- Typically recur every 2 to 7 years

¹Probability of an El Niño refers to the likelihood of a sustained (that is, over several seasons) warming across a broad region of the eastern and central tropical Pacific, not just along coastal South America.

²Based on sea surface temperature departures from the long-term average over the "NINO3.4" region (120-170W, 5S-5N).