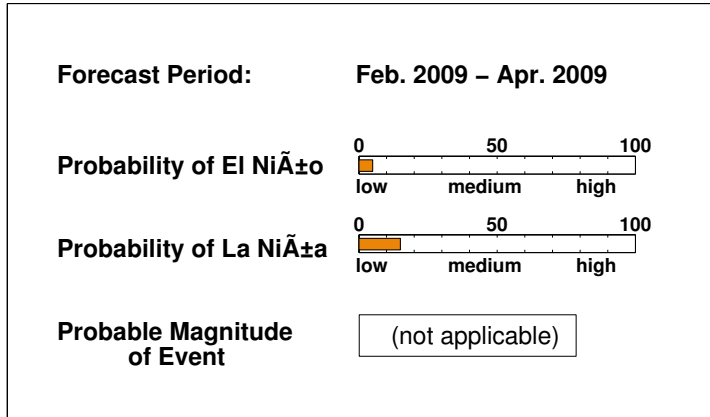


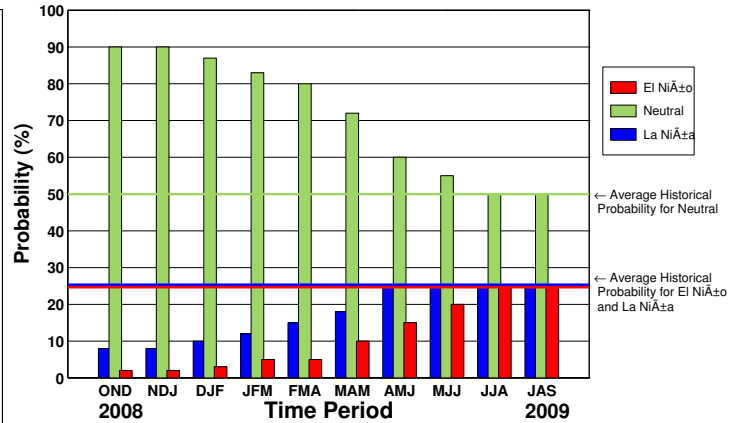
ENSO QUICK LOOK Oct 16, 2008 A monthly summary of the status of El Niño, La Niña and the Southern Oscillation, or "ENSO"

The equatorial Pacific is presently ENSO-neutral. The equatorial Pacific region shows a mix of weak above- and below-average sea surface temperatures (SSTs). There is a 90 percent probability of ENSO-neutral conditions persisting over the coming season.

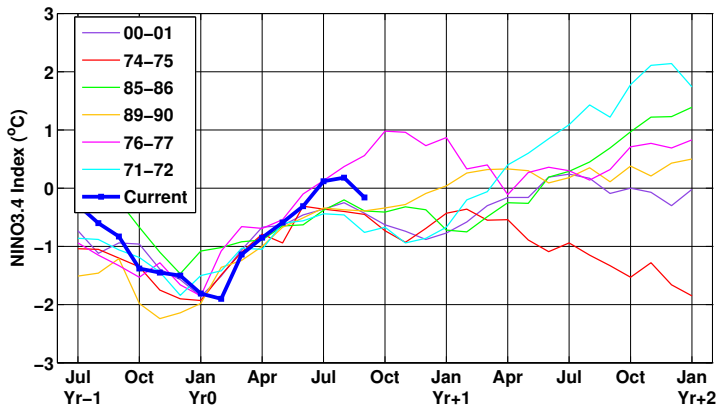
Current ENSO Forecast Summary¹



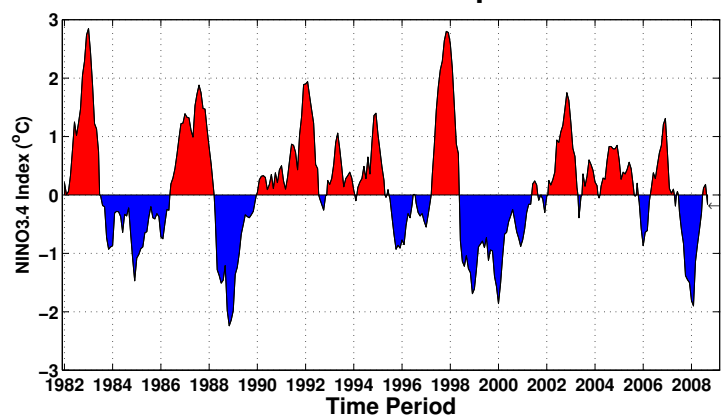
IRI Probabilistic ENSO Forecast²



Current Condition vs. Similar Conditions²



Historical Sea Surface Temperature Index²



Historically Speaking

El Niño and La Niña events tend to develop during the period Apr-Jun and they:

- *Tend to reach their maximum strength during Dec-Feb*
- *Typically persist for 9-12 months, though occasionally persisting for up to 2 years*
- *Typically recur every 2 to 7 years*

¹Probability of an El Niño refers to the likelihood of a sustained (that is, over several seasons) warming across a broad region of the eastern and central tropical Pacific, not just along coastal South America.

²Based on sea surface temperature departures from the long-term average over the "NINO3.4" region (120-170W, 5S-5N).