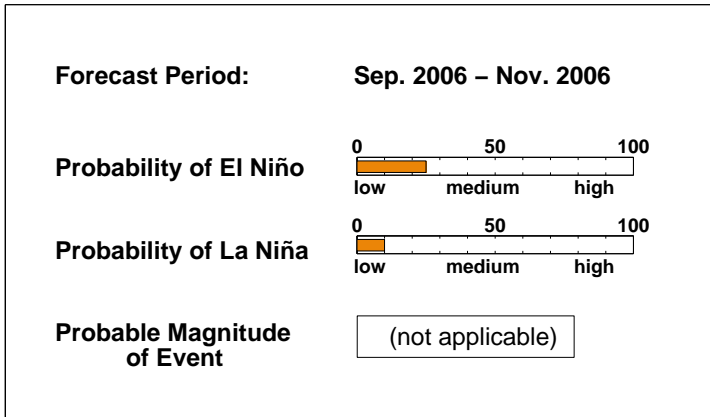


ENSO QUICK LOOK May 17, 2006

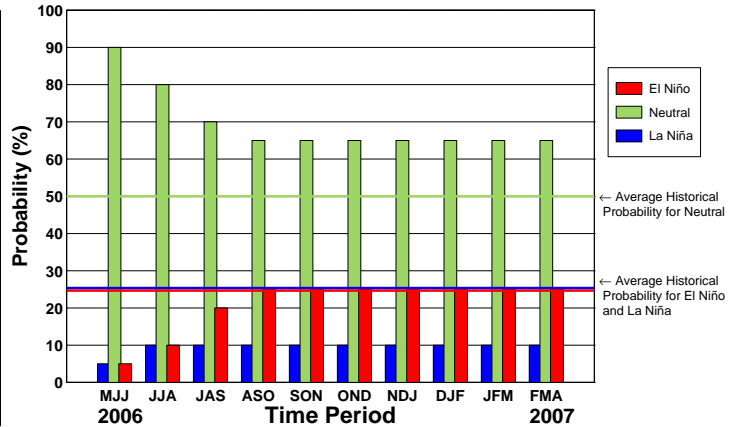
A monthly summary of the status of El Niño, La Niña and the Southern Oscillation, or "ENSO"

Neutral conditions exist in the tropical Pacific. As of mid-May sea surface temperatures are within 0.5C of average across the equatorial Pacific. Based on the latest observations and forecasts, the probability of neutral conditions continuing through the May-June-July 2006 season is approximately 90 percent.

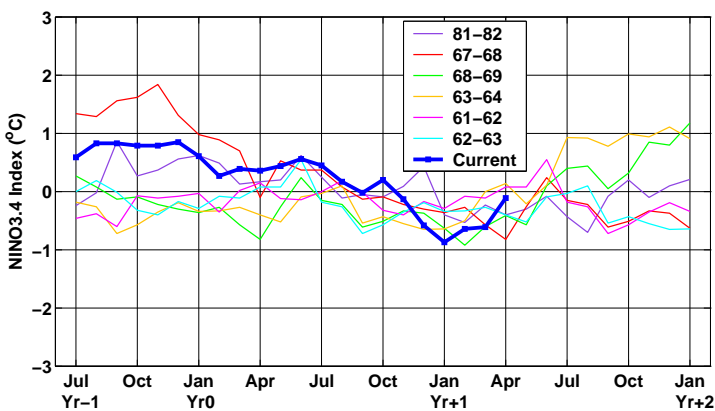
Current ENSO Forecast Summary¹



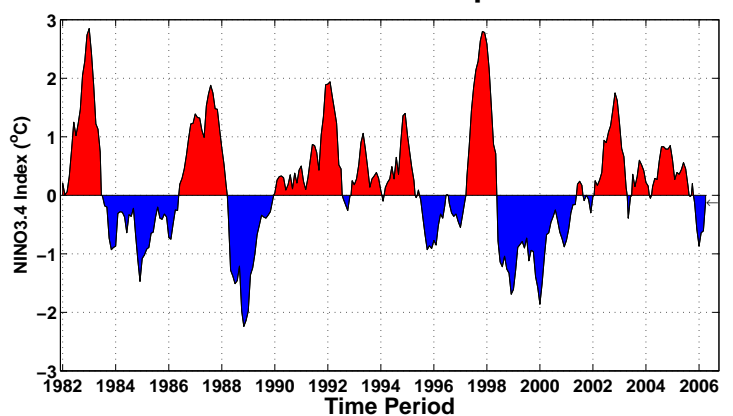
IRI Probabilistic ENSO Forecast²



Current Condition vs. Similar Conditions²



Historical Sea Surface Temperature Index²



Historically Speaking

- El Niño and La Niña events tend to develop during the period Apr-Jun and they:*
- Tend to reach their maximum strength during Dec-Feb
 - Typically persist for 9-12 months, though occasionally persisting for up to 2 years
 - Typically recur every 2 to 7 years

¹Probability of an El Niño refers to the likelihood of a sustained (that is, over several seasons) warming across a broad region of the eastern and central tropical Pacific, not just along coastal South America.

²Based on sea surface temperature departures from the long-term average over the "NINO3.4" region (120-170W, 5S-5N).