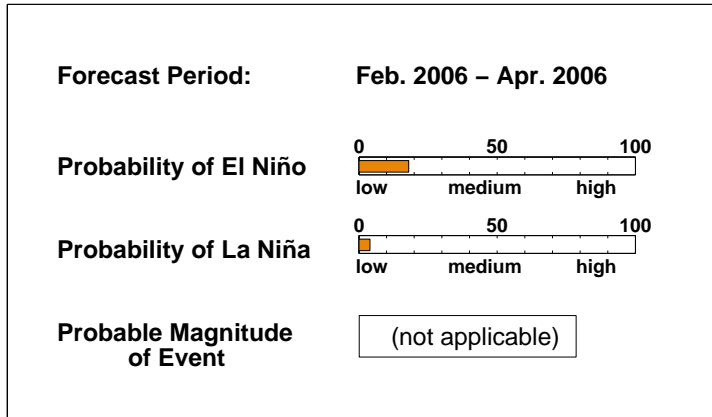


ENSO QUICK LOOK October 17, 2005

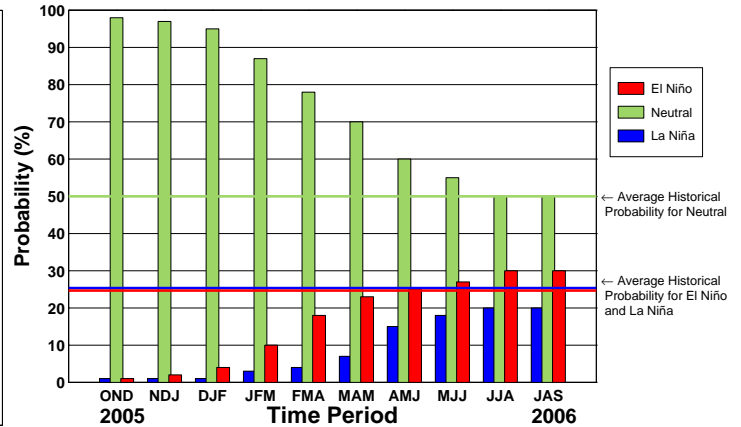
A monthly summary of the status of El Niño, La Niña and the Southern Oscillation, or "ENSO"

Sea surface temperatures across the equatorial Pacific remain near average, and are neutral in terms of the ENSO condition. Based on the latest observations and forecasts, it is approximately 98 percent likely that neutral conditions will prevail over the Oct-Nov-Dec 2005 season.

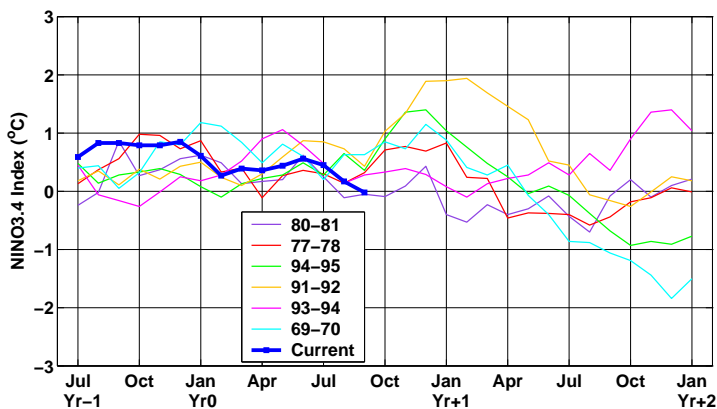
Current ENSO Forecast Summary¹



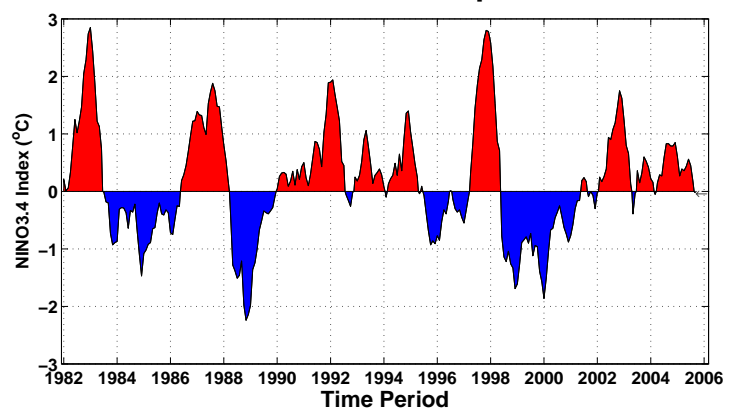
IRI Probabilistic ENSO Forecast²



Current Condition vs. Similar Conditions²



Historical Sea Surface Temperature Index²



Historically Speaking

El Niño and La Niña events tend to develop during the period Apr-Jun and they:

- Tend to reach their maximum strength during Dec-Feb
- Typically persist for 9-12 months, though occasionally persisting for up to 2 years
- Typically recur every 2 to 7 years

¹Probability of an El Niño refers to the likelihood of a sustained (that is, over several seasons) warming across a broad region of the eastern and central tropical Pacific, not just along coastal South America.

²Based on sea surface temperature departures from the long-term average over the "NINO3.4" region (120-170W, 5S-5N).