

ENACTS

TRANSFORMING CLIMATE SENSITIVE DECISIONS

New Opportunities for
Zambian Farmers through
Climate Services

The Enhancing National Climate Services (ENACTS) initiative delivers robust climate data, targeted information products and training for policy makers and practitioners, enabling them to apply climate information to development decisions with confidence.



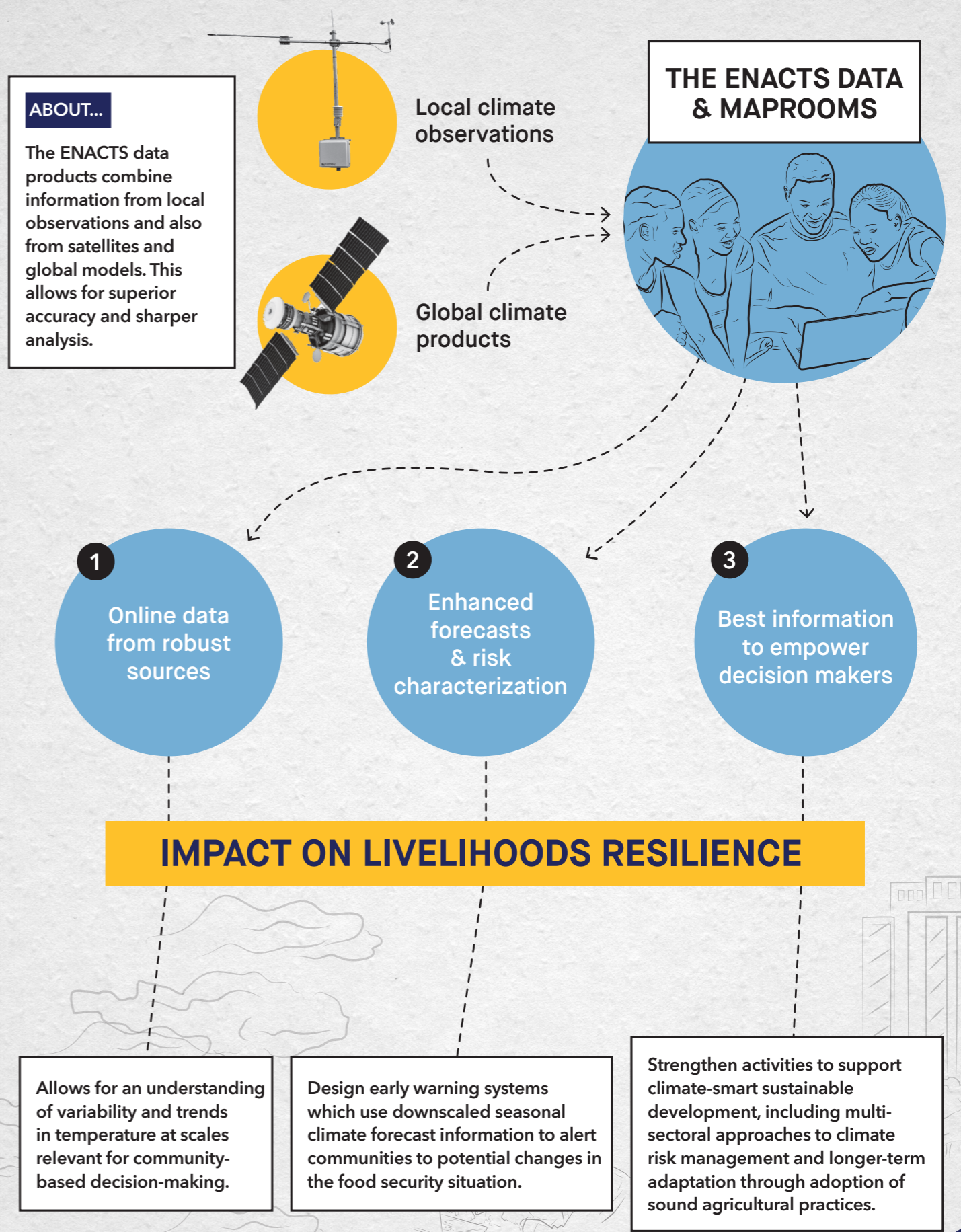
TRANSFORMING CLIMATE SENSITIVE DECISIONS

With huge untapped agricultural potential, Zambia's reliance on rain-fed agriculture means a favorable rainy season is the key to success for commercial farmers and small-holders alike.

Overcoming the data challenge

- Sufficient and timely rains are critical to obtaining the best yield.
- Rainfall and temperature are also significant drivers of outcomes in other sectors – such as health and energy.
- High rainfall can impact health through vector-borne diseases such as malaria.
- Whereas drought can result in food insecurity and malnutrition.

Zambia's National Meteorological Agency is pioneering efforts to dramatically improve the availability, access and use of climate data and information through the development of ENACTS, helping to maximize the impact of development investments in a varying climate.



“ ENACTS can be a source of climate information to increase user participation for a climate resilient society. ”

– Zambia Meteorology Department

The ENACTS Advantage

Availability

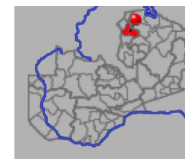
- Blended data to overcome observational gaps
- Result: Over 30 years of high-resolution rainfall and temperature data now available, enabling climate analysis from community to national levels.

Access

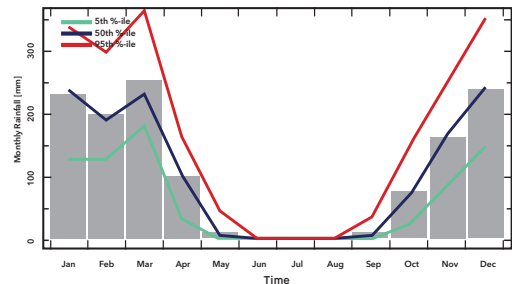
- Online Maprooms
- Result: User-friendly tools for the analysis, visualization, and downloading of climate information.

Built capacity and empowerment

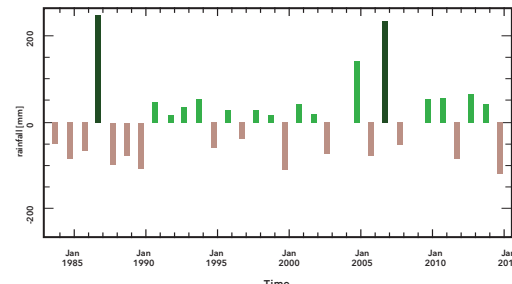
- Empowered stakeholders with increased capacity
- Result: Strengthened policy analysis, relevant for multiple sectors.



Monthly Rainfall Climatology



Yearly Seasonal Rainfall Anomalies: July-Dec



Observations for Kawambwa, Luapula, Zambia

FIND OUT MORE...

<http://41.72.104.142/maproom/iri.columbia.edu>

Partners



RESEARCH PROGRAM ON Climate Change, Agriculture and Food Security

