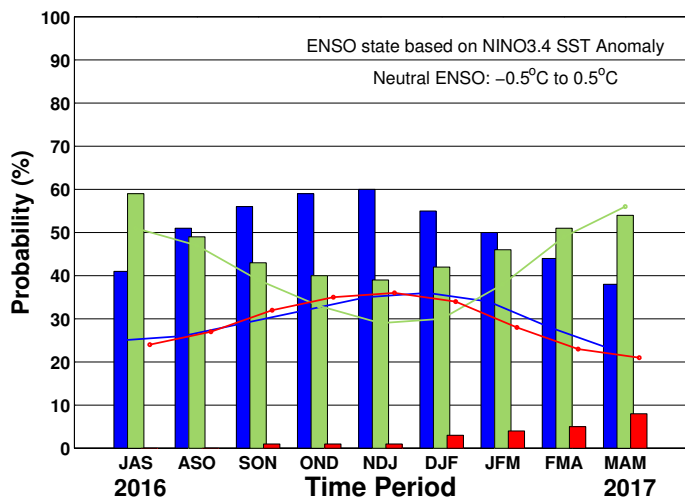


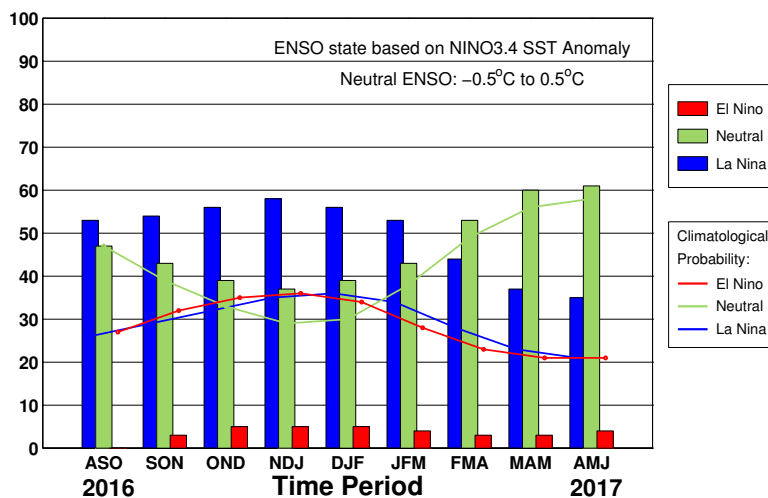
ENSO QUICK LOOK Aug 18, 2016 A monthly summary of the status of El Niño, La Niña and the Southern Oscillation, or “ENSO”, based on NINO3.4 index (120-170W, 5S-5N)

During mid-August 2016 the tropical Pacific SST anomaly was close to -0.5°C , approaching the weak La Niña threshold. However, most key atmospheric variables continue to indicate neutral ENSO conditions. Although the upper level winds in the tropical Pacific are slightly suggestive of La Niña, the lower level winds remain near average. The Southern Oscillation index and the pattern of cloudiness and rainfall in the equatorial Pacific also indicate neutral ENSO despite a mild tilt toward La Niña. The collection of ENSO prediction models indicates SSTs most likely near the borderline of cool-neutral and weak La Niña from the present through fall and into winter.

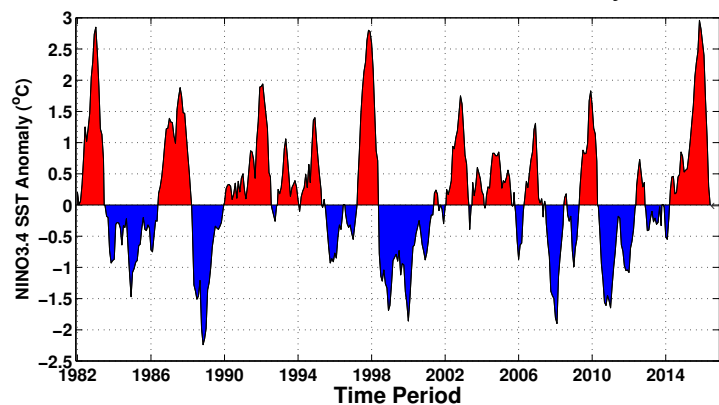
Early-Aug CPC/IRI Official Forecast¹



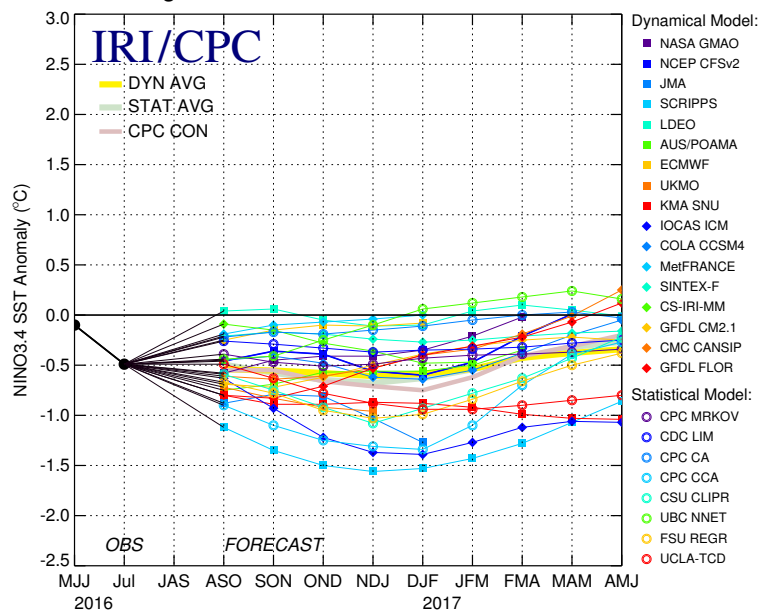
Mid-Aug IRI/CPC Model-Based Forecast²



Historical NINO3.4 SST Anomaly



Mid-Aug 2016 Plume of Model ENSO Predictions



Historically Speaking

- El Niño and La Niña events tend to develop during the period Apr-Jun and they:*
- Tend to reach their maximum strength during Dec-Feb
 - Typically persist for 9-12 months, though occasionally persisting for up to 2 years
 - Typically recur every 2 to 7 years