

The ENACTS(Enhancing National Climate Services) Approach

Tufa Dinku, Remi Cousin, John Del Coral and Madeleine Thomson
International Research Institute for Climate and Society(IRI), the Earth Institute at Columbia University
tufa@iri.columbia.edu

What is ENACTS?

ENACTS is IRI's initiative to transform national climate services by improving availability, access and use of climate information. Availability of climate data is improved by combining quality-controlled data from the national observation network with satellite estimates for rainfall and reanalysis products for temperature. Access to information products is enhanced by making derived information products available online. Use of climate information is facilitated by engaging and collaborating with potential users.

The Three Pillars ENACTS

ENACTS

Improve Availability

- Build capacity of NMHS
- Quality Control station data
- Combine station data with proxies
- Improve seasonal forecast

Enhance Access

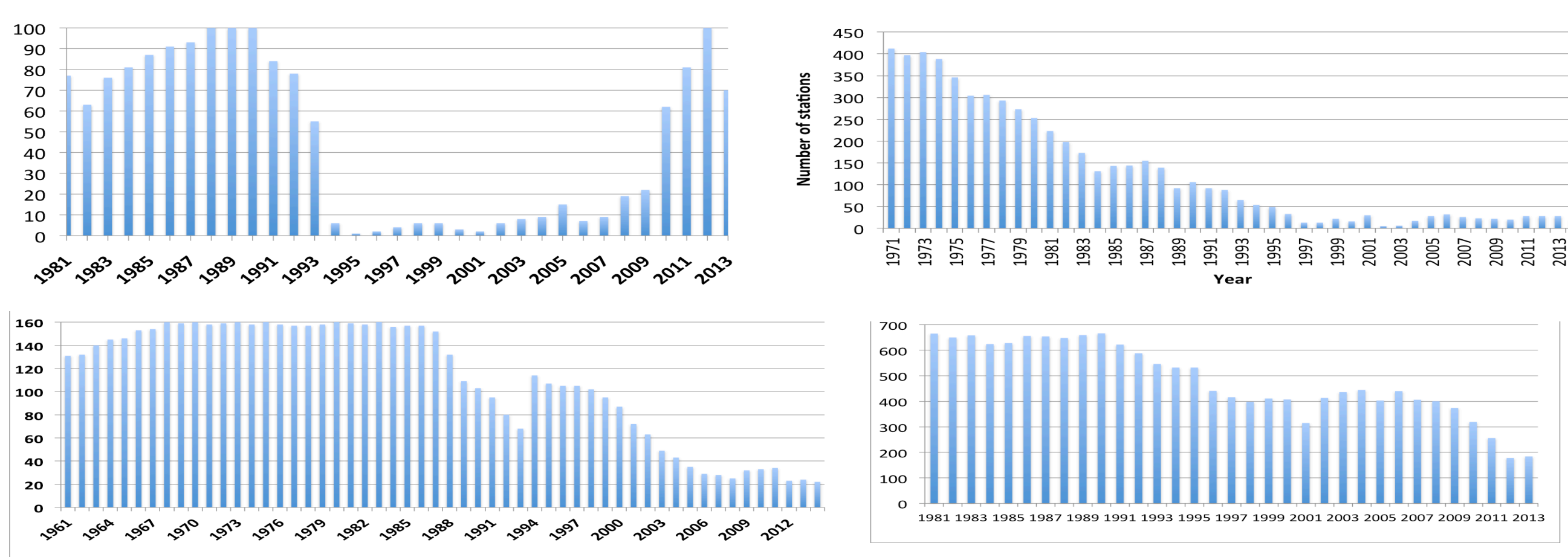
- Install IRI Data Library
- Develop online tools for data analysis and visualization
- Create mechanisms for data sharing

Promote Use

- Engage users:**
- Raise awareness
 - Build capacity of users to understand and use climate info
 - Involve users in product development

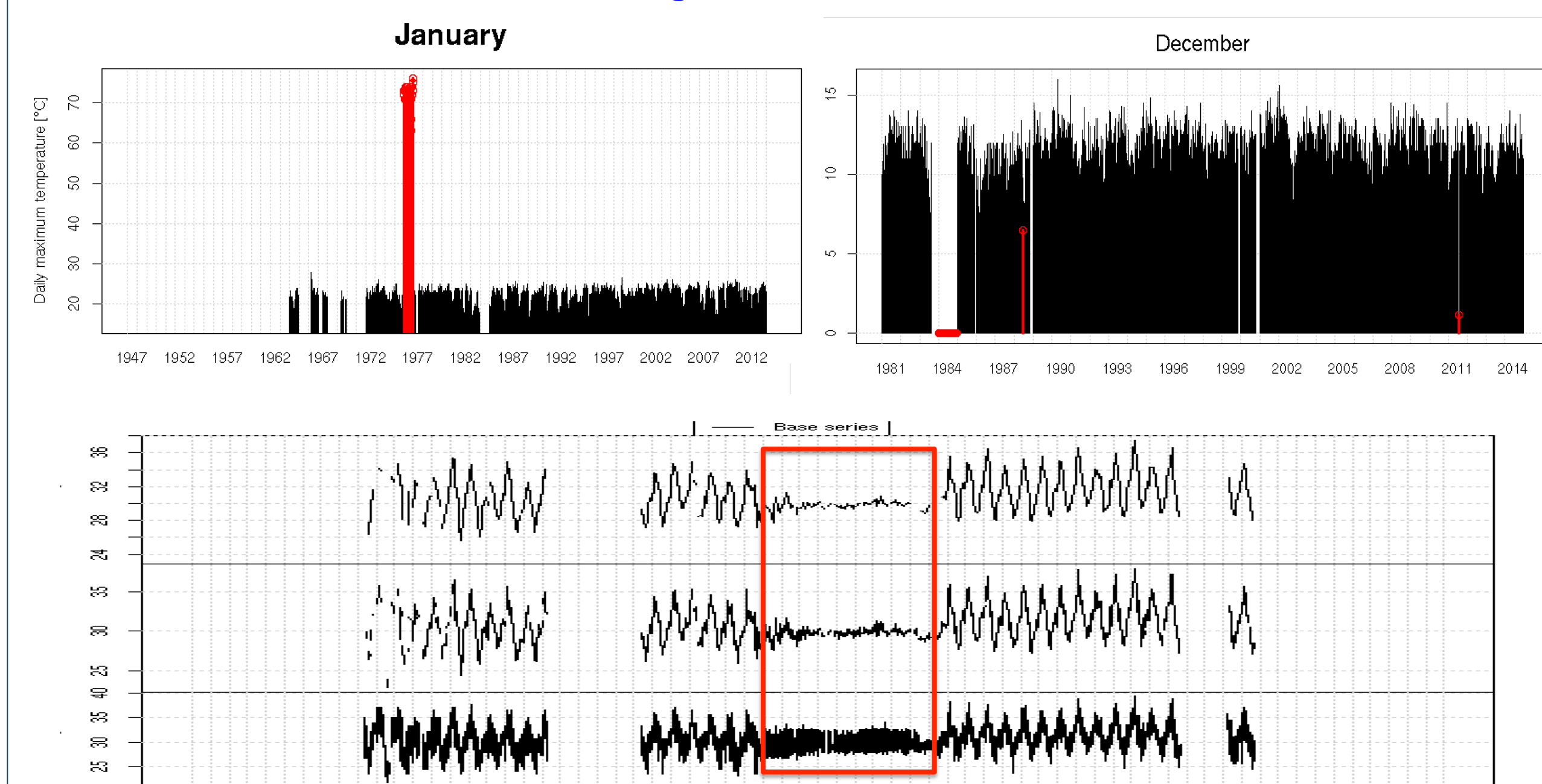
1. Improving Data Availability

1. Assess Data Availability



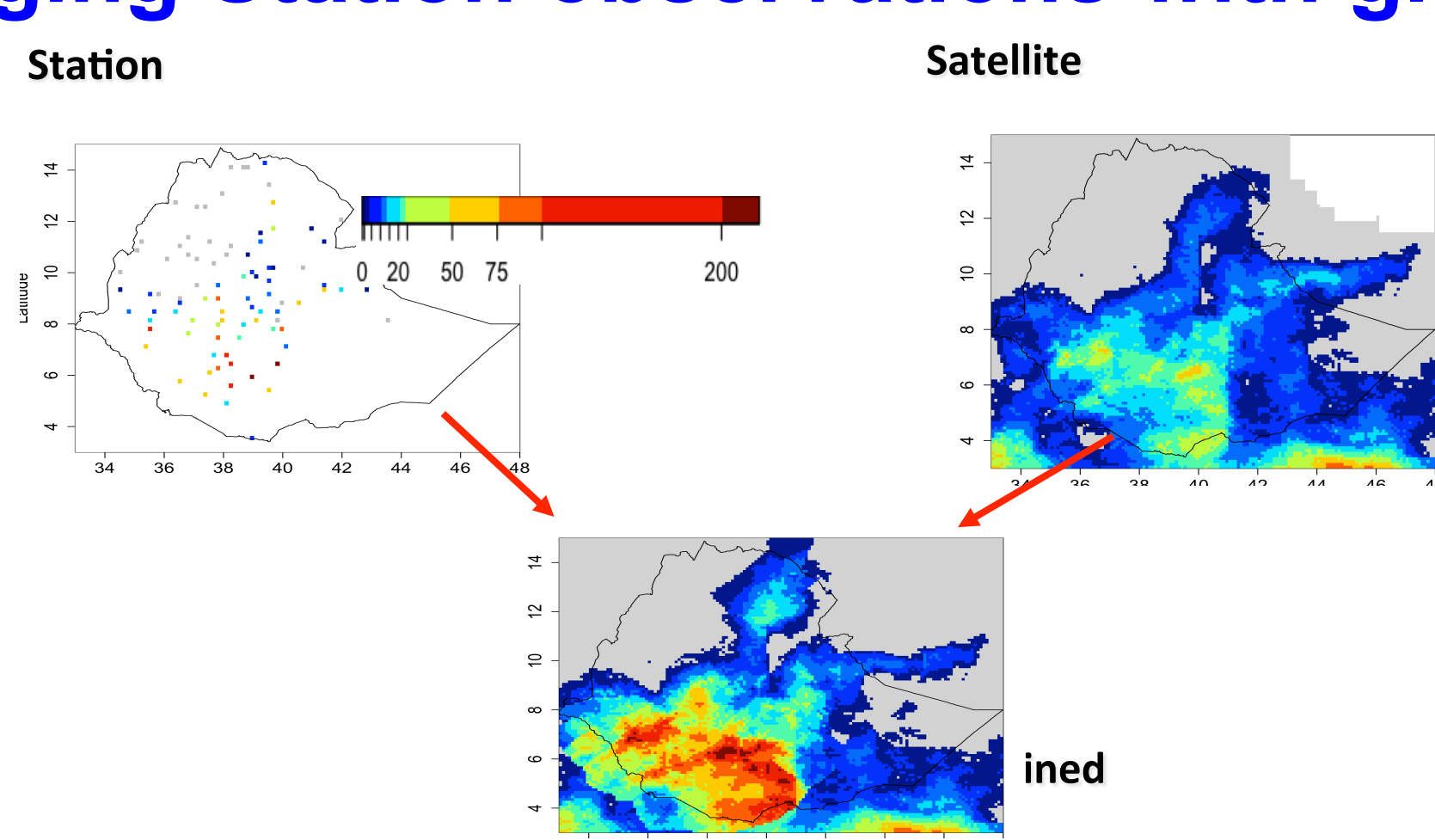
Average number of stations reporting each year for four different countries Africa

2. Assess Data Quality



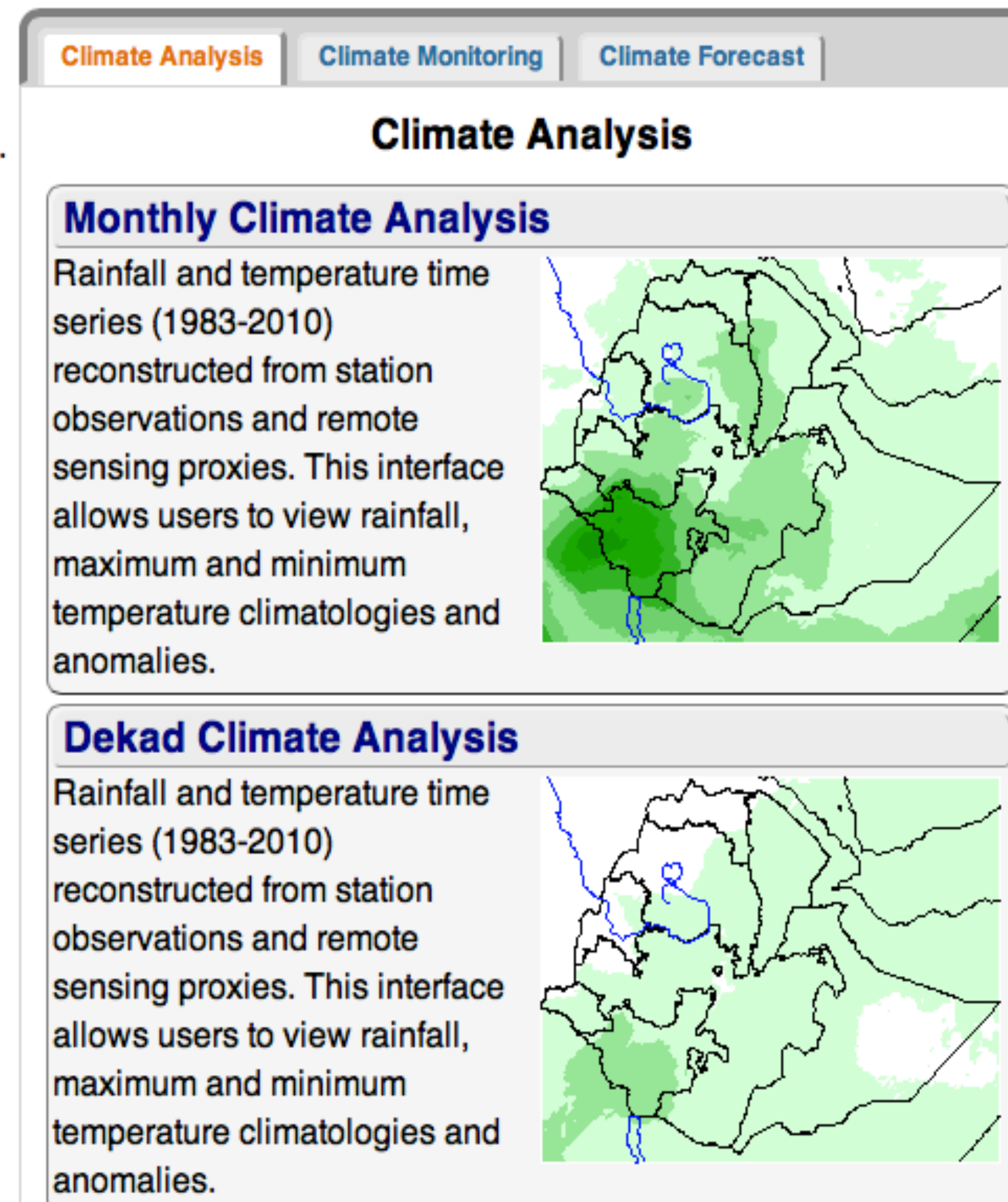
Different data quality issues discovered in the databases Of some countries.

3. Merging Station observations with global proxies



2. Enhancing Access

The ENACTS Maproom



The **Climate Analysis** Maproom provides information on the mean climate at any given point or at national and sub-national levels.

The **Climate Monitoring** Maproom enables monitoring of the current season, allowing for the comparison of the current season to either the mean or data from recent years.

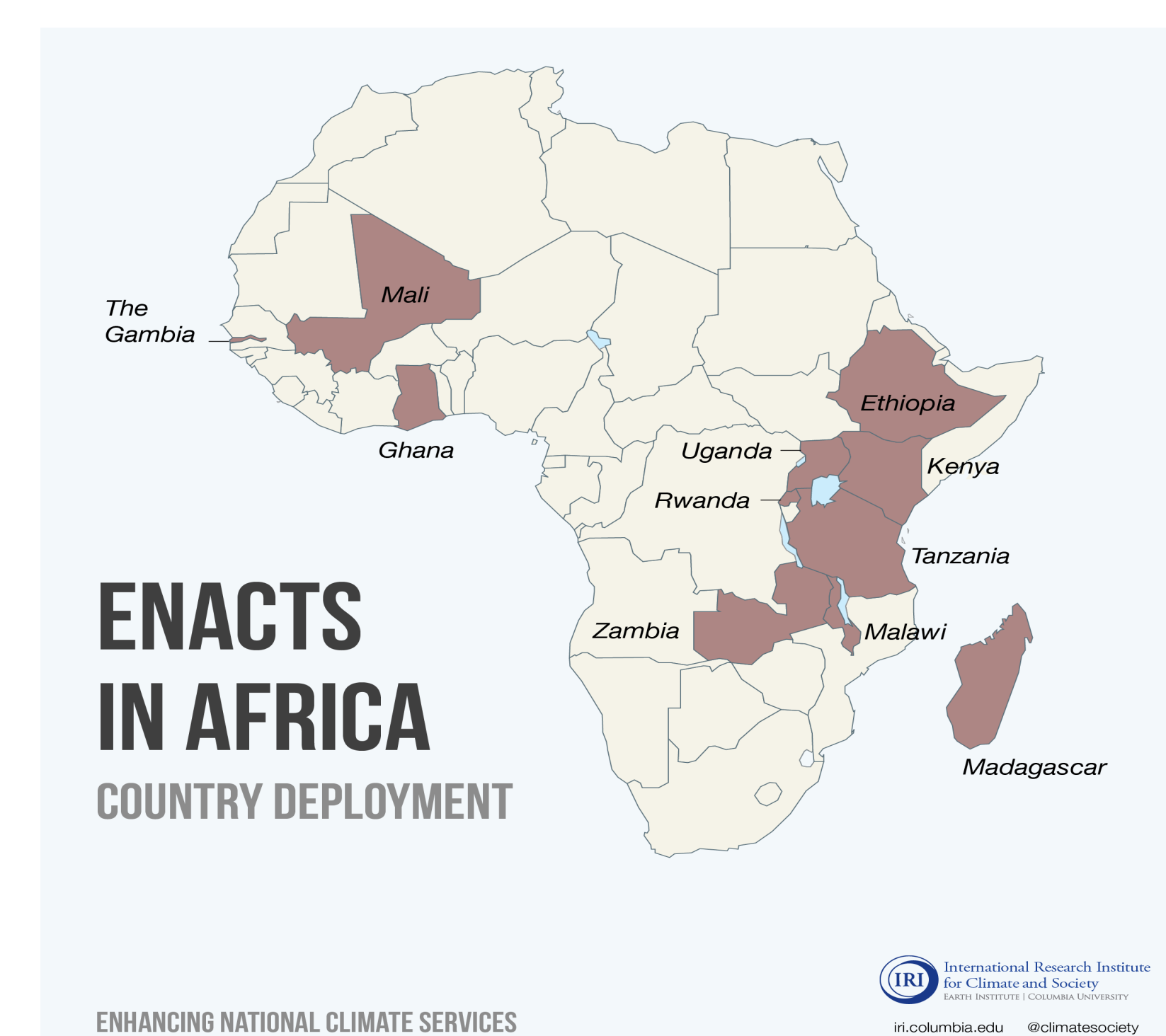
The **Climate Forecast** Maproom translates seasonal forecasts to values that may more easily be understood by users, and also enables analyses of the impact of different phases of the ENSO and the Indian Ocean Dipole(IOD) on rainfall

Major Outputs

- Over 30/50-years of climate time series for every 4km grid across each country:
 - Now data available where there are no stations
- Installation of the IRI Data Library at NMHS
 - A powerful tool for generating climate information
- Unprecedented online access to information products:
 - Satisfies the needs of many users
 - Overcomes (partly) the challenges of data access
- Built capacity at NMHS and some user communities

ENACTS Countries

- Ethiopia
- Gambia
- Ghana
- Madagascar
- Mali
- Rwanda
- Tanzania
- Zambia
- Kenya
- Uganda
- Malawi



Moving Forward

1. Strengthen ENACTS where it has already been implemented
 - More climate variables
 - More application-specific products
 - More user engagement
2. Expand ENACTS to more Countries